

BROADLEAF®

specialty & game meats



Australian Wagyu Tomahawk MS5
portioned 30oz IVP, 4pc cs Item# 56031
portioned 26-28oz IVP, 4pc cs Item# 56030

March 2025
Newsletter for Wholesale Distributors



BROADLEAF[®]

specialty & game meats

APSR Striploins 0 x 1

Item# 58202

4pc/cs, 32lb cs avg
***portioned steaks available**

#20513 C/C 10oz

#20514 C/C 12oz



AngusPure New Zealand pasture raised grass fed, grass finished beef.
The finest Angus genetics raised on the purest grasslands in the world.
Beef...the way nature intended.

March 1st, 2025 to March 31st, 2025

Index:	Page #
Grass Fed Beef; New Zealand AngusPure Special Reserve	2
Wagyu Beef; Australian WX by Ranger Valley	3
Wagyu Beef; Australian Sanchoku Stanbroke	4
Wagyu Beef; Japanese Wagyu, Australian, Tomahawks	5
Wagyu Beef; Portion Control, Grind Products	6
Bison	7
Bison Portion Control, Grind Products	8
Wild Boar; Texas	9
Kurobuta, Sakura, and Iberico Pork, Suckling/Roasting Pigs	10
Bacon, Goat, Grass Fed NZ Lamb, AUS Marrunga Marble Lamb	11
Poultry (Capon, Ducks, Cornish Hens, Guinea Hens and Poussin)	12
Poultry (Jidori Chicken, Pheasants, Quail and Squab)	13
Rabbit, Alligator, Camel, Turtle, Frog Legs	14
Sausages	15
Glace, Veal Bones, Hot Dogs, Smoked Products, Trimmings	16
Salami, Pates, Mousses, Foie Gras	17
Venison; Farm Raised New Zealand	18
Elk; Farm Raised New Zealand	19
Broadleaf Retail Items Page	20

It's March already! You know what that means? March Madness and St. Patrick's Day all upcoming. Stock up and let's celebrate with Broadleaf game. Don't forget to save some oven space for: Australian wagyu, especially briskers AND corned beef briskets. Plenty of NZ lamb cuts for that perfect Easter Holiday meal, or maybe roast some wagyu striploins or ribeyes! Perhaps allot grill space for all natural, tender, New Zealand 100% Grass Fed & Finished, AngusPure Special Reserve steaks: top sirloin, coulottes, flat irons, ribeyes & strips! Don't forget to pick up some Cervena Venison Tenderloins, Bistro Filets & Denver Leg Steaks, Elk flanks or NY striploins. Consult with your Broadleaf Sales Rep on exciting ideas for potential menu specials, or plot that new menu change.

Don't have time or room to make your own glace or stocks? Leaving pots on overnight can dig into your utilities. *We've got your solution.* Our expertly made grass fed veal, beef glaces are amazing,...and our lobster stocks are out of this world! They are sized to maximize space, provide

Key:

- Red text denotes price change
- Blue prices denote cases can be broken & sold by each
- Green prices denote cases cannot be broken

(#) = Beef Marbling Score (BMS)

A/L = Airline (wing drummette attached)

B/O = Boneless

S/B/O = Semi Boneless

B/I = Bone In

TTS = Trim To Silver

DND = Denuded

BRN = Boneless, Rolled & Netted

H/O = Head On

H/Off = Head Off

HOFO = Head On, Foot On

BP = Bulk Pack

IVP = Individually Vacuum Packed

S/On = Skin On

S/Off = Skin Off

C/C = Center Cut

MKT = Market Price

B/L = Broadleaf

G/N = Greg Norman

C/R = Chateau Royal

G/F = Grimaud Farms

S/P = Squab Producers

P/P/P = Palmetto Pigeon Plant

A/S = Angel's Salumi

OOS = Currently Out-of-Stock

Returned Product is Subject to a 15% Restocking Fee and all Broken Cases Subject to \$.25/lb. or Piece Case Break Charge

Written Purchase Orders Preferred for Greater Accuracy and Communication

Hours of Operation: 6AM – 4:30PM Monday – Friday

www.broadleafgame.com

Code	Item	FZN	CHD	Code	Item	FZN	CHD
------	------	-----	-----	------	------	-----	-----

ANGUSPURE SPECIAL RESERVE PASTURE RAISED NEW ZEALAND BEEF

- *Pasture Raised, Grass Fed, Grass Finished Angus Beef.*
- *No Hormones, No Anti-biotics. "Never-Ever"*
- *Halal Certified.*

- 58430 Tenderloin, 190, 5 pc, 20# avg
- 58542 Ribeye, B/O 7 rib, lip off, 4 pc, 36# avg
- 58202 Striploin, 0x1, 4 pc, 32# avg
- 58852 Short Ribs B/O, 2 pc / 8 pk, 48# avg
- 58790 Chuck Short Rib B/O, 2 pc / 18 pk, 40# avg
- 58306 Coulotte, 1/4" trim, 10 pc, 30# avg
- 58704 Sirloin Flap Meat, 8 pc, 48# avg
- 58720 Chuck Tail Flap, 2 pc / 12 pk, 36# avg
- 58368 Tri Tip, 36# avg
- 58724 Flank Steak, 14 pc, 36# avg
- 58304 Top Sirloin, Cap Off, 184B, 6 pc, 30# avg
- 58739 Inside Skirt, Peeled, 11 pc, 33# avg
- 58854 Brisket, Full, 5 pc, 40# avg
- 58714 Flat Iron, 2 pc / 4 pk, 40# avg
- 58161 Top Round, 3 pc, Cap Off (Denuded), 33# avg
- 58703 Chuck Eye Roll, 3 pc, 45# avg
- 58713 Shoulder Clod, 4 pc, 48# avg
- 58715 Chuck Tender, 2 pc / 6 pk, 36# avg
- 58173 Peeled Knuckle, 4 pc, 40# avg
- 58153 Outside Flat, 3 pc, 45# avg
- 58152 Eye of Round, 8 pc, 32# avg
- 33400 Oxtails, 12pc, 34# avg
- 58644 Pipe Bones, BP 44# avg
- 58716 Mixed Bones, BP, 37# avg

FEATURE

- 58556 Oven Prepared Rib (Export), 4 pc 3-4 rib, 23# avg**
- 58553 Oven Prepared Rib (Export), 2 pc 7 rib, 35# avg**

ANGUSPURE SPECIAL RESERVE - PATTIES & GRINDS

- 20142 Ground, 4/2.5#
- 20140 Ground, 10/1#
- 20143 Patties 2-1 Round, 10#
- 20144 Patties 3-1 Round, 10#
- 20145 Patties 4-1 Round, 10#

APSR Flat Iron | Item# 58714

Flat Iron 8oz | Item# 20552

ANGUSPURE NEW ZEALAND PASTURE RAISED GRASS FED, GRASS FINISHED BEEF.
 THE FINEST ANGUS GENETICS RAISED ON THE PUREST GRASSLANDS IN THE WORLD.
 BEEF...THE WAY NATURE INTENDED

ANGUSPURE (A/P) PORTIONED PRODUCTS

- 20523 A/P Ribeye Stks, Center Cut 10 oz
- 20524 A/P Ribeye Stks, Center Cut 12 oz
- 20513 A/P NY Strip Stks, Center Cut 10 oz
- 20514 A/P NY Strip Stks, Center Cut 12 oz
- 20552 A/P Flat Iron Stks 8oz
- 20555 A/P Short Rib 7-8 oz, 10# cse
- 20509 AngusPure Tenderloin Tails
- 20543 A/P Top Sirloin Stks, Center Cut 8oz

Code	Item	FZN	CHD	Code	Item	FZN	CHD
WX BY RANGERS VALLEY AUSTRALIAN WAGYU BEEF							
RV8208	Tenderloin (3), 190, 5 pc, 28# cse avg.			RV3814	Cheek Meat (3), 2 pc / 16 pk, 35# cse avg.		
RV8239	Tenderloin (4), 190, 5 pc, 30# cse avg.			RV8212	Top Blade, Flat Iron (3), 5 pc, 31# cse avg.		
RV3826	Tenderloin (5), 190, 5 pc, 30# cse avg.			RV8243	Top Blade, Flat Iron (4), 5 pc, 31# cse avg.		
RV3801	Tenderloin (7), 190, 2 pc, 14# cse avg.			RV8205	Coulotte (3), 184D, 10 pc, 30# cse avg.		
RV8286	Tenderloin (9), 190, 2 pc, 14# cse avg.			RV8236	Coulotte (4), 184D, 10 pc, 30# cse avg.		
RV8207	Strip Loin (3), B/O 1 Rib, 2 pc, 26# cse avg.			RV8262	Coulotte (5), 184D, 10pc, 30# cse avg.		
RV8238	Strip Loin (4), B/O 1 Rib, 2 pc, 30# cse avg.			RV8277	Coulotte (7), 184D, 10pc, 30# cse avg.		
RV3897	Strip Loin (5), B/O 1 rib, 2 pc, 30# cse avg.			RV8305	Coulotte (9), 184D, 10pc, 30# cse avg.		
RV3865	Strip Loin (7), B/O 1 rib, 2 pc, 35# cse avg.			RV8206	Tri Tips (3), 2 pc / 5 pk, 30# cse avg.		
RV3817	Strip Loin (9), B/O 1 rib, 2 pc, 30# cse avg.			RV8237	Tri Tips (4), 2 pc / 5 pk, 30# cse avg.		
RV8217	Rib eye (3), B/O 7 rib, lip off, 2 pc, 28# cse avg.			RV8294	Tri Tips (5), 2 pc / 5 pk, 30# cse avg.		
RV8248	Rib eye (4), B/O 7 rib, lip off, 2 pc, 28# cse avg.			RV3879	Tri Tips (9), 2 pc / 5 pk, 30# cse avg.		
RV3861	Rib eye (5), B/O 7 Rib lip off, 2 pc, 30# cse avg.			RV8209	Sirloin Flap Meat (3), 5 pc, 30# cse avg.		
RV3869	Rib eye (7), B/O 7 Rib lip off, 2 pc, 30# cse avg.			RV8240	Sirloin Flap Meat (4), 5 pc, 30# cse avg.		
RV3802	Rib eye (9), B/O 7 Rib lip off, 2 pc, 30# cse avg.			RV8295	Sirloin Flap Meat (5), 5 pc, 30# cse avg.		
RV8218	Short Ribs B/O (3), 2 pc / 5 pk, 20# cse avg.			RV3804	Sirloin Flap Meat (7), 5 pc, 30# cse avg.		
RV8249	Short Ribs B/O (4), 2 pc / 5 pk, 20# cse avg.			RV3858	Sirloin Flap Meat (9), 5 pc, 30# cse avg.		
RV3845	Outside Skirts (3) Peeled, 2 pc / 5 pk, 21# cse avg.			RV8204	Top Sirloin (3), Cap Off, 184B, 4 pc, 40# cse avg.		
RV8210	F flank Steaks (3), 10 pc, 24# cse avg.			RV8235	Top Sirloin (4), Cap Off, 184B, 4 pc, 40# cse avg.		
RV8241	F flank Steaks (4), 10 pc, 24# cse avg.			RV8261	Top Sirloin (5), Cap Off, 184B, 4 pc, 40# cse avg.		
RV8296	F flank Steaks (5), 10 pc, 24# cse avg.			RV8276	Top Sirloin (7), Cap Off, 184B, 4 pc, 40# cse avg.		
RV8288	F flank Steaks (7), 10 pc, 24# cse avg.						
RV8283	F flank Steaks (9), 10 pc, 24# cse avg.						
RV8215	Chuck Ribs B/O (3), 2 pc / 5 pk, 25# cse avg.						
RV8246	Chuck Ribs B/O (4), 2 pc / 5 pk, 25# cse avg.						
RV8214	Chuck Tail Flap (3), 2 pc / 10 pk, 30# cse avg.						
RV8245	Chuck Tail Flap (4), 2 pc / 5 pk, 30# cse avg.						
RV8299	Chuck Tail Flap (5), 2 pc / 5 pk, 30# cse avg.						
RV3848	Hanging Tenders, 10 pc, 25 # cse avg.						
RV8222	Full Brisket (3), 1 pc / 2 pk, 35# cse avg.						
RV8200	Top Round Cap Off (3), 2 pc, 40# cse avg.						
RV8231	Top Round Cap Off (4), 2 pc, 40# cse avg.						
RV8291	Top Round Cap Off (5), 2 pc, 40# cse avg.						
RV8213	Chuck Eye Roll (3), 2 pc, 40# cse avg.						
RV8244	Chuck Eye Roll (4), 2 pc, 40# cse avg.						
RV8203	Peeled Knuckle (3), 4 pc, 40# cse avg.						
RV8234	Peeled Knuckle (4), 4 pc, 40# cse avg.						
RV8293	Peeled Knuckle (5), 4 pc, 40# cse avg.						



Wagyu Ribeye MS3 | Item# 8207

Code	Item	FZN	CHD	Code	Item	FZN	CHD
------	------	-----	-----	------	------	-----	-----

SANCHOKU STANBROKE AUSTRALIAN WAGYU BEEF

- SB8208 Tenderloin (3), 190, 5 pc, 28# avg.
- SB8239 Tenderloin (4/5), 190, 5 pc, 30# avg.
- SB6203 Tenderloin (6/7), 190, 4pc, 28# cse avg.
- SB3408 Tenderloin (8/9), 190, 5pc, 28# cse avg.
- SB8207 Strip Loin (3), B/O 1 Rib, 3 pc, 35# cse avg.
- SB8238 Strip Loin (4/5), B/O 1 Rib, 3 pc, 45# cse avg.
- SB6202 Strip Loin (6/7), B/O 1 rib, 3 pc, 45# cse avg.
- SB1408 Strip Loin (8/9), B/O 1 rib, 3 pc, 45# cse avg.
- SB8217 Rib eye (3), B/O 7 rib, lip off, 3 pc, 40# cse avg.
- SB8248 Rib eye (4/5), B/O 7 rib, lip off, 3 pc, 45# cse avg.
- SB6201 Rib eye (6/7), B/O 7 Rib lip off, 3 pc, 45# cse avg.
- SB2408 Rib eye (8/9), B/O 7 Rib lip off, 3 pc, 40# cse avg.
- SB8218 Short Ribs B/O (3), 2 pc / 6 pk, 25# cse avg.
- SB8249 Short Ribs B/O (4/5), 2 pc / 5 pk, 25# cse avg.
- SB3845 Outside Skirts (3) Peeled, 2 pc / 10 pk, 25# cse avg.
- SB8210 Flank Steaks (3), 2 pc / 8 pk, 25# cse avg.
- SB8241 Flank Steaks (4/5), 2 pc / 8 pk, 25# cse avg.
- SB8215 Chuck Ribs B/O (3), 2 pc / 6 pk, 33# cse avg.
- SB8246 Chuck Ribs B/O (4/5), 2 pc / 6 pk, 33# cse avg.
- SB8214 Chuck Tail Flap (3), 2 pc / 6 pk, 20# cse avg.
- SB8245 Chuck Tail Flap (4/5), 2 pc / 6 pk, 20# cse avg.
- SB3848 Hanging Tenders, 2 pc / 6 pk, 25 # cse avg.
- SB8200 Top Round Cap Off (3), 3 pc, 40# cse avg.
- SB8231 Top Round Cap Off (4/5), 3 pc, 40# cse avg.
- SB8213 Chuck Eye Roll (3), 2 pc, 40# cse avg.
- SB8298 Chuck Eye Roll (4/5), 2 pc, 40# cse avg.
- SB8203 Peeled Knuckle (3), 4 pc, 40# cse avg.
- SB8234 Peeled Knuckle (4/5), 4 pc, 40# cse avg.
- SB3814 Cheek Meat (3), 2 pc / 12 pk, 25# cse avg.
- SB8212 Top Blade, Flat Iron (3), 4 pc, 20# cse avg.
- SB8205 Coulotte (3), 184D, 6 pc, 25# cse avg.
- SB8236 Coulotte (4/5), 184D, 6 pc, 25# cse avg.
- SB8206 Tri Tips (3), 2 pc / 6 pk, 30# cse avg.
- SB8237 Tri Tips (4/5), 2 pc / 6 pk, 30# cse avg.
- SB8209 Sirloin Flap Meat (3), 5 pc / 2 pk, 35# cse avg.
- SB8240 Sirloin Flap Meat (4/5), 4 pc / 2 pk, 35# cse avg.
- SB8267 Sirloin Flap Meat (6/7), 4 pc / 2 pk, 35# cse avg.
- SB8289 Sirloin Flap Meat (8/9), 4 pc / 2 pk, 35# cse avg.

- SB8204 Top Sirloin (3), Cap Off, 184B, 6 pc, 40# cse avg.
- SB8235 Top Sirloin (4/5), Cap Off, 184B, 6 pc, 40# cse avg.
- SB8260 Top Sirloin (6/7), Cap Off, 184B, 6 pc, 40# cse avg.
- SB8222 Full Brisket (3), 1 pc / 2 pk, 35# cse avg.
- SB8920 Back Ribs (4/5), 2 pc / 6 pk 42# cse avg.
- SB6204 Shortloin (6/7), B/I 1 rib, 2 pc, 50# cse avg.
- 59939 **Wagyu Steamship Round 1 pc, 90# cse avg.**
- 59981 Wagyu Bones Canoe Cut, BP, 40# cse avg.



Wagyu Striploin MS4-5 | Item# SB8238



Wagyu Canoe Bones | Item#59981

Code	Item	FZN	CHD
------	------	-----	-----

JAPANESE WAGYU BEEF

- 99970 Tenderloin A5 (8-10), 2 pc, 16# avg.
- 99971 Tenderloin A5+ (10-12), 2 pc, 16# avg.
- 99999 Strip Loin A5 (8-10), 2 pc, 26# avg.
- 99998 Striploin A5+ (10-12), 2 pc, 26# avg.
- 99948 Rib eye A5 (8-10), 2 pc, 26# avg.
- 99949 Rib eye A5+ (10-12), 2 pc, 26# avg.

WAGYU BEEF - PATTIES & GRINDS

- 58970 Patties 10oz Round, 10#
- 58992 Patties 2-1 Round, 10#
- 58962 Patties 6oz Round, 11.25#
- 58993 Patties 3-1 Round, 10#
- 58994 Patties 4-1 Round, 10#
- 58902 Patties 8-1 Round, bulk pack, 10#
- 58999 Ground, 4/2.5#
- 58998 Ground, 10/1#

RIBEYE TOMAHAWK CHOPS

- 56032 Wagyu Rib eye B/I Tomahawk stk (3+) approx 36-40oz, 2/2pk, 9-11#
- 58900 Wagyu Rib eye B/I Tomahawk stk (3+) approx 30-32oz, 2/2pk, 8-10#
- 58901 Wagyu Rib eye B/I Tomahawk stk (3+) approx 26-28oz, 2/2pk, 7-8#
- 56031 Wagyu Rib eye B/I Tomahawk stk (3+) IVP 30oz, 4pc, 8-10#
- 56030 Wagyu Rib eye B/I Tomahawk stk (3+) IVP 26-28oz, 4pc, 7-8#
- 56078 Wagyu Rib eye B/I Tomahawk stk (5) approx 30oz, 2/2pk, 8-10#
- 56079 Wagyu Rib eye B/I Tomahawk stk (5) approx 28oz, 2/2pk, 8-10#
- 20530 AngusPure Special Reserve Rib eye B/I Tomahawk stk approx 26-28oz, 2/2pk, approx 6#
- 20531 AngusPure Special Reserve Rib eye B/I Tomahawk stk 28-30oz Tomahawk, 8# avg.



Japanese Wagyu Tenderloin A5+
Item # 99971

Wagyu Beef Patties
Legendary Flavor.



Wagyu Patties 2-1 **Item# 58992**

Code Item

FZN

CHD

WAGYU BEEF - PORTIONED PRODUCTS

58971 Tenderloin stk (3) 8 oz, 12 pc
 58973 Tenderloin Tails (3), 10#
 57934 Ribeye Sandwich stk (3+), 10#
 57935 Ribeye Sandwich Stks, (3+), 10/1#
 58919 Top Sirloin C/C stk (3+) 8oz, IVP, 15 pc
 58923 Top Sirloin stk (3+) 4oz, IVP, 10#
 57867 Top Sirloin C/C stk (6+) 8oz, 15 pc
 51454 NY Strip Filet C/C stk (3) 8oz, 12 pc
 57802 NY Strip Filet C/C stk (5) 8oz, 12 pc
 58986 NY Strip C/C stk (3) 10oz, 12 pc
 58988 NY Strip C/C stk (3) 12oz, 12 pc
 58934 NY Strip sandwich stk (3+), 10#
 58889 NY Strip vein end roast (3+), 10#
 57800 NY Strip stk C/C (5) 8oz, 12 pc
 57810 NY Strip stk C/C (5) 10oz, 12 pc
 57820 NY Strip stk C/C (5) 12oz, 12 pc
 58896 Porterhouse stk (3) 24oz, 6 pc
 58866 T-Bone stk (3) 16oz, 10 pc
 50625 Bone In NY Strip C/C stk (3) 17-18oz, 8 pc
 58927 Flat Iron stk (3), 8oz, 10#
 58938 Kabob Meat (Diced), 10#
 58940 Stew Meat (Diced), 10#

GREG NORMAN SIGNATURE WAGYU - PORTIONED PRODUCTS

55637 Patties 2-1 Round, 10#
 55639 Patties 8-1 Round, BP, 10#
 55638 Ground, 4/2.5#
 58969 Hot Dog (skinless) 6 inch 4-1, 2/5#

Wagyu Beef Tomahawks

Item #58900 ms3, 30oz (left) Item #56078 ms5, 30oz (right)



Wagyu Beef Tomahawks attract attention on the menu
 and especially on the dining table!
 Experience the flavor, luxury and tenderness of this 300+ day
 grain fed & finished Wagyu Beef.

See page 5

Code Item

FZN

CHD

BISON

* Free Range and All Natural.

* Humanely Raised & USDA Inspected

* Lower Fat, Calories, and Cholesterol than Beef, Chicken or Ostrich.

24269 Tenderloin 190, 5/5# up, 30# avg.

24266 Tenderloin 189A, 3-4/5# avg.

24426 Tomahawk Rack

24246 Rib Eye, 3 pc, 31# avg.

24212 Export Ribs, 30# avg.

24232 NY Strip Loin, 3 pc, 18# avg., 0 x 1 Vein Out

24272 Top Sirloin, 3 pc, 30# avg.

24276 Tri Tips (USDA), 35#

24219 Flank Steaks, 25#

24257 Short Ribs, B/I, 30# avg.

24264 Hanging Tenders, 28# avg.

24263 Top Rounds, 4 pc, 60# avg.

24223 Eye of Round, 8 pc, 46# avg.

24202 Bottom Flats, 4 pc, 65# avg.

24057 Steamship Rounds, 1/55# avg. *Special Order*

24215 Shoulder Clods, Call for Specs (USDA)

24204 Briskets, 4 pc, 28# avg.

24209 Chuck Eye Roll, Call for Specs

24260 Oxtails, 30# avg.

24292 Back Ribs, 25# avg.

24099 Liver, 30# avg.

24214 Teres Major 5 pk, 5 pc/pk, 25# avg.

24256 Skirt Steak (outside) 3 pk, 7 pc/pk, 30# avg.

BISON - PORTIONED PRODUCTS

24149 Tomahawk Rib Chop 20-28oz/14 pc IVP

24049 Rib Eye Stk 10oz, 10#

24050 Rib Eye Stk 12oz, 10#

24028 NY Strip Stk 10oz, 10#

24029 NY Strip Stk 12oz, 10#

24071 Top Sirloin Stk 8oz, 10#

24072 Top Sirloin Stk 10oz, 10#

24073 Top Sirloin Stk 12oz, 10#

24093 Tenderloin Tails, 10# avg.

24032 Osso Bucco 1 inch, 20# avg.



BROADLEAF®

specialty & game meats

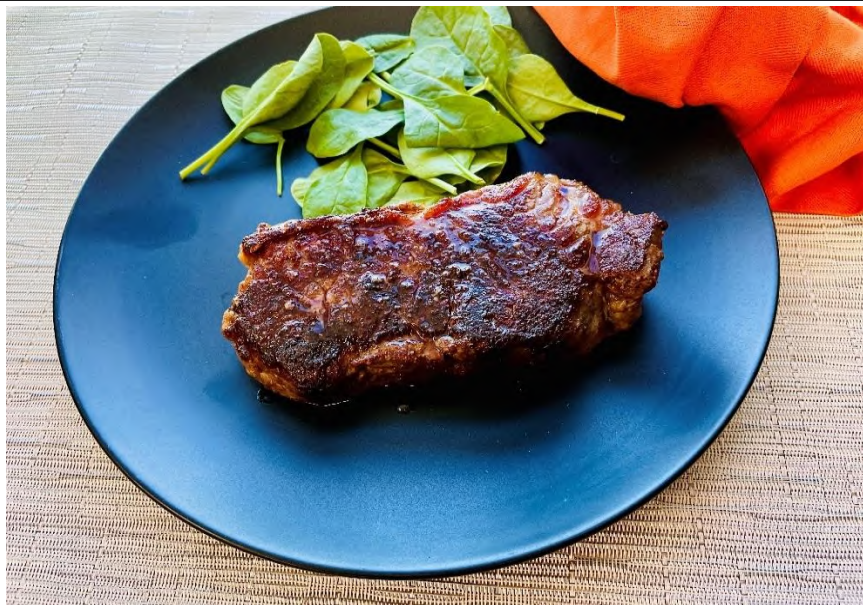
Experience an American
Classic, straight from the
ol' Frontier



Bison Tenderloin 189A | Item 24269

Our North American Bison are raised sustainably, without the use of antibiotics or growth hormones, and are fed a vegetarian diet of grasses and grains.

Code	Item	FZN	Code	Item	FZN
------	------	-----	------	------	-----



North American Bison Strip Steak | Available in 8oz, 10oz, 12oz & Retail



North American Bison Ribeyes 12oz item #24050

BISON GROUND AND PATTIES

- 24025 Ground, 4/2.5#
- 24016 Ground, 10/1#
- 24034 Patties 2-1 Round, 10#
- 24037 Patties 3-1 Round, 10#
- 24039 Patties 4-1 Round, 10#
- 24042 Patties 8-1 Round, 10#
- 24134 w/Beef Patties 2-1 Round, 10#
- 24043 w/Beef Patties 3-1 Round, 10#
- 24136 w/Beef Patties 4-1 Round, 10#
- 24026 w/Beef ground 4/2.5#

RETAIL BISON PRODUCTS

- 24082 Rib Eye Stk Boxed, 6/2x5oz
- 24080 NY Strip Stk Boxed, 6/2x7oz
- 24077 Top Sirloin Stk Boxed, 6/2x8oz
- 24085 Patties 4-1 Round Boxed, 6/4x4oz
- 24000 Ground, 10/1#
- 24081 Jerky Black Pepper, 2oz - [price per pack](#)
- 24083 Jerky Black Pepper, 4oz - [price per pack](#)



Code	Item	FZN	Code	Item	FZN
------	------	-----	------	------	-----

BROADLEAF TEXAS WILD BOAR

* *Wild Caught in Texas.*

* *Free Range with No Added Hormones, Steroids, or Antibiotics.*

* *All Natural, Lean and Exceptionally Flavorful.*

31050 3.5oz Tenderloins, 2 pc/14 pk, 9# avg.

31022 Tenderloins, 13# avg.

31021 B/O Loins TTS, 1.5# up, 45# avg.

31998 Frenched 10 Rib Rack 3-4# avg., 2 pc/ 2pk, 12# avg.

31999 Frenched 10 Rib Rack 2-3# avg., 2 pc/2 pk, 13# avg.

31013 Frenched 10 Rib Rack 1-2# avg., 4 pc/2 pk, 14# avg.

31051 Saddle B/I, 29# avg.

31053 Loin NY Strip B/O, DND, 20# avg.

31004 Shoulder BRN, 25# avg.

31010 Wild Boar Leg, BRN, 20# avg.

31009 Leg B/I, 48# avg.

31111 Leg B/I Steamship, 45# avg.

31132 Neck Meat B/O, 22# avg.

31015 Shanks B/I, 15# avg.

31056 Wild Boar Volcano Shank, 20# avg.

31101 Baby Back Ribs, 18# avg.

31220 St. Louis Ribs, 15# avg.

31023 Wild Boar Trim, 44# avg.

31125 Lace Fat, 10# avg.

31003 Bones, 23# avg.

31124 Fat, 40# avg.

WILD BOAR - PORTIONED PRODUCTS & GRINDS

31044 Loin Medallions 4oz, 10#

31045 Loin Medallions 6oz, 10#

31046 Loin Medallions 8oz, 10#

31011 Leg Medallions 4oz, 10#

31005 Loin Chops B/I 4-6oz

31006 Loin Chops B/I 6-8oz

31007 Loin Chops B/I 8-10oz

31019 Stew Meat (Diced), 2/5#

31008 Ground, 4/2.5#

31108 Ground, 10/1#

31039 Patties 2-1 Round, 10#

31107 Patties 3-1 Round, 10#



Texas Wild Boar 10 Rib Rack 2-3lb
Item# 31999

WHOLE WILD BOAR, HEAD OFF. SKIN OFF

Please allow for one week lead time while in season

31302 Whole Boar, H/Off, 20-29#

31303 Whole Boar, H/Off, 30-39#

31304 Whole Boar, H/Off, 40-49#

31305 Whole Boar, H/Off, 50-59#

MOSSY OAK NEW ITEM

71222 Wild Boar Chorizo 5/2#

Code	Item	FZN	CHD	Code	Item	FZN
------	------	-----	-----	------	------	-----

CERTIFIED BERKSHIRE PORK (AKA KUROBUTA)

- 33222 Tenderloin 415, 10 pc, 12# avg. (Heritage)
- 33203 8 Bone Frenched Rack, 5 pc, 30# avg. (Heritage)
- 33204 8 Bone Rack, cap on, chine off, 5 pc, 30# avg. (Heritage)
- 33704 8 Bone Rack, cap off, chine off, 5 pc, 33# avg. (BerkrIDGE)
- 33217 Loin C/C B/O, 35# avg.
- 33246 Loin NY Strip B/O, vein end off, 4 pc, 16# avg.
- 33216 Full Loin B/I 410, 4 pc, 68# avg.
- 33720 St. Louis Ribs, 25# avg.
- 33205 Bellies B/O S/Off 1 Rib, 4 pc, 40# avg. (Heritage)
- 33705 Bellies B/O S/Off 1 Rib, 5 pc, 50# avg. (BerkrIDGE)
- 33724 Cheek Meat, 2 pc, 10# avg. (BerkrIDGE)
- 33708 Boston Butt B/O, 52# avg. (BerkrIDGE)
- 33208 Boston Butt B/O, 45# avg. (Heritage)
- 33207 Boston Butt B/I 406, 73# avg. (BerkrIDGE)
- 33235 Steamship Round 2 pc 36# avg.
- 33238 Shoulder Ribs 30# avg.
- 33213 Hind Shanks 22oz, 34# avg.
- 33242 Loin C/C B/I Chops 12oz, 10#
- 33048 Porterhouse Chop 12 oz. 10#
- 33221 Fore Shank Osso Bucco, 18-20oz, 38# avg.
- 33212 Ground 4/5#
- 33262 Country Style breakfast saus. w/Sage 8-1 (32/8 oz)
- 33263 Kurobuta Bratwurst 4-1 (16/1#)
- 33264 Kickin' Kurobuta spicy 4-1 (16/1#)

SAKURA DUROC PORK

- 33322 Tenderloin 415, 10 pc, 12# avg
- 33120 Rib Chop 12 oz. 10#
- 33304 8 Bone Rack C/Off, 4 pc, 41# avg.
- 33305 Pork Belly 1 Rib, 4 pc cse, 39# avg.
- 33317 Boneless C/C Loin, 50# avg.

SUCKLING / ROASTING PIGS

- 35302 Whole Pig Head On, Under 20#
- 35003 Whole Pig Head On, 1/20-29#
- 35004 Whole Pig Head On, 1/30-39#
- 35005 Whole Pig Head On, 1/40-49#
- 35006 Whole Pig Head On, 1/50-59#
- 35016 Whole Pig Head On, 1/60-69#
- 35009 Whole Pig Head On, 1/90-120#

Kurobuta Pork

This outrageously juicy pork breed originated in Berkshire England. In the 19th century England gave a shipment of these hogs as a gift to Japanese diplomats and called them "Kurobuta" meaning black pig



Kurobuta Belly B/O Skin Off
Item# 33705
5pc, 30# cs avg



IBERICO PORK

- 33600 Secreto (shoulder blade), 8 pc, 21# avg. Limited
- 33601 Pluma (flank), 10 pc, 23# avg. Limited
- 33602 Presa (shoulder steak), 9-12 pc, 20# avg.
- 33603 Solomillo (tenderloin), 22lb avg cse wght
- 33608 Carre (rack of Iberico), 4 pc, 14# avg.
- 33630 Belly Secreto, 14 pc avg, 10# avg.
- 33605 Costilla (spare ribs), 4 pc, 18# avg.
- 33607 Pancetta (belly, skin off), 5 pc, 20# avg.

Code	Item	FZN	CHD	Code	Item	FZN	CHD
------	------	-----	-----	------	------	-----	-----

BACON

- 30032 Nueske's Applewood Smkd Sliced 10-12ct, 2/5#
- 30029 Nueske's Applewood Smkd Sliced 12-14ct, 10#
- 30035 Nueske's Applewood Smkd Sliced 16-20ct, 2/5#
- 30040 Nueske's Applewood Smkd Slab, 1/12-14#
- 30036 Nueske's Canadian Bacon, Half-Loin, 2/2.5#
- 30021 NCS Bacon Ends and Pieces
- 31025 Wild Boar Slab, 2/5#
- 30016 Wild Boar Sliced (retail w/labels), 10/1#
- 30017 Wild Boar Ends and Pieces (3/8" cubes)
- 30010 Kurobuta Slab
- 30011 Kurobuta Sliced, 15/1#
- 30060 Irish Cured Rashers Bacon, 20/1#
- 50011 Wagyu Beef Bacon Slab, 2/4#

GOAT

- 69722 6-8 Way cut up, Halal Certified (35# avg.)

MARRUNGA MARBLE LAMB *Halal Certified

Broadleaf is proud to source Australian Marrunga Marble Lamb. An evolutionary and unique 90 day barley fed, offering the finest marbled lamb. A subtle flavor showcasing a refined dining experience.

- MM4756 Lamb Rack Frenched 8-Rib Cap ON, 18pc, 40# avg
- MM4764 Lamb Rack Frenched 8-Rib Cap OFF, 18pc, 45# avg
- MM4805 Lamb Leg Bone In Chump Off ABO, 6pc, 30# avg
- MM4880 Lamb Shortloin Split 3" Tail, 30#avg
- MM4883 Lamb Shortloin Saddle 1" Tail, 40# avg
- MM4995 Lamb Shoulder Banjo Cut, 5pc, 35# avg
- MM5015 Lamb Spare Ribs, 12pk, 30# avg
- MM5030 Lamb Foreshank, 10/2pk, 35# avg
- MM5031 Lamb Hindshank, 16/2pk, 35# avg
- MM5050 Lamb Shoulder BRN, 10pc, 45# avg
- MM5070 Lamb Leg B/O Chump/Shank OFF, 6pc, 50# avg
- MM5130 Lamb Chump Cap ON, 10/2pk, 40# avg
- MM5140 Lamb Striploin Cap ON, 12/4pk, 48# avg

NEW ZEALAND PASTURE RAISED LAMB

**Family Farmed Free Range, Grass Fed Lamb, Never confined to a feedlot
*No Added Hormones - Ever *Subprimals Halal Certified*

- 65214 Long Leg, Whole, Bone In, 40# avg.
- 65244 **Short Cut Leg, Bone In, Chump Off, CKT**
- 65262 Leg, EZ Carve, Bone In, 6/5#
- 65252 Leg, Boneless (Tunnel Bone)
- 65233 Top Sirloin, Cap Off
- 65582 Tenderloin
- 65543 *Frenched 12-14oz Racks, 14/2pk*
- 65544 *Frenched 14-16oz Racks, 12/2pk*
- 65545 *Frenched 16-18oz Racks, 12/2pk*
- 65548 *Frenched 18-20oz Racks, 12/2pk*
- 65549 *Frenched 20-22oz Racks, 10/2pk*
- 65586 Loins 6-10oz, 30# avg.
- 65723 Oyster Cut Shoulder, Bone In, Shank off (Banjo)
- 65705 Shoulder, Boneless, Rolled, Netted, 46# avg.
- 65824 Hind Shanks 16-18oz, 24# avg.
- 65804 Fore Shanks 12oz+, 31# avg.
- 14037 Stew Meat, 2x5#

PATTIES AND GRINDS *Halal Certified*

- 16034 Ground Lamb, 4/2.5#
- 16014 Ground Lamb, 10/1#
- 16006 Patties 2-1 Round, 10#
- 16000 Patties 3-1 Round, 10#
- 16005 Patties 4-1 Round, 10#
- 16026 Patties 8-1 Round, BP, 10#



Marrunga Marble Lamb Frenched 8 Rib Rack Item# MM4756

Code Item

FZN

CHD

POULTRY

- 60003 Capon Whole 6/7-9#
 94004 Geese Whole 5/8-10 lb
 94005 Geese Whole 4/10-12 lb
 64150 B/L ABF All Natural Pekin Duck Breasts, 6-7oz
 64151 B/L ABF All Natural Pekin Duck Breasts, 7-8oz
 64152 B/L ABF All Natural Pekin Duck Breasts, 8-10oz
 64153 B/L ABF All Natural Whole Pekin Duck, 6/4-4.5#
 64154 B/L ABF All Natural Whole Pekin Duck, 6/4.5-5#
 64155 B/L ABF All Natural Pekin Confit Legs 8/2pk
 64156 B/L ABF All Natural Pekin Legs, 35# avg.
 64158 B/L ABF All Natural Pekin Ground, 6/2#
 64052 Pekin Duck Liver, 2 x 20#
 64001 Pekin Duck Bones, 30# avg.
 64121 Moulard Duck Brst B/O, 28-32oz
 64032 Muscovy Duck Hen, 8/4# avg.
 64031 Muscovy Duck Hen Brst, 20/16oz
 64030 Musc Duck Drake Double Brst S/On, 10/30oz
 64035 Retail Muscovy Duck Drake Brst, 10 pc, 10# avg.
 64056 Muscovy Drake Duck Wings, 40lb cse
 64046 Muscovy Drake Leg, 6/9pk, 45# avg.
 64050 Muscovy Hen Leg, 30# avg.
 64036 Retail Muscovy Duck Hen Leg, 10# avg.
 64160 Rendered Duck Fat Pail 7#
 64008 H/V Rendered Duck Fat Large Pail, 7.5#
 64009 H/V Rendered Duck Fat Small Pail, 1.75#
 95014 Guinea Hen, 8/3-3½# (G/F)
 95114 Guinea Hen 6/2.75-3 1/2# (J/F)
 95002 Guinea Hen Legs B/I, 6/12pk (G/F)
 66007 Partridge Chukar, HOFO, 20 pc, 15-19oz
 69027 Poussin, Whole 20/15-17oz (PPP)
 69026 Poussin, Whole 16/19-22oz (PPP)
 69011 Poussin S/B/O, 6x2/16-18oz (PPP)
 69012 Poussin S/B/O 6x2/13-15oz (PPP)
 69021 Poussin, Whole Poulet Rouge 12/16-20 oz
 62143 Poulet Rouge Whole Chicken 6/3.0-3.5# *New Feature
 63104 Cornish Game Hens S/B/O, 24/14-16oz
 63106 Cornish Game Hens S/B/O, 16/10-12oz



Poussin whole 15-17oz | Item# 69027



Guinea Hen Whole 3-3.5lb | Item# 95014

Code Item

FZN CHD

POULTRY CONTINUED

- 62069 Jidori Chicken *GMO Free* Whole, 12/2.5-3#
- 62070 Jidori Chicken *GMO Free* Whole, 10/3-3.5#
- 62074 Jidori Chicken *GMO Free* A/L Brst, 8-10oz/24pc, 15# avg.
- 62073 Jidori Chicken *GMO Free* A/L Brst, 10-12oz/24pc, 15# avg.
- 62176 Jidori Chicken Breast B/O S/Off 7oz 24pc/cs
- 62179 Jidori Chicken Thigh B/O S/Off, 1x 10#
- 62187 Jidori Chicken Party Wings, 1x 10#
- 68413 Pheasant Whole, 9/2½-3# (MDWP)
- 68214 Pheasant Whole, 8/3-3½# (M/P)
- 68215 Pheasant Whole, 7/3½-4# (MDWP)
- 68411 Pheasant Brst B/O S/On, 8-10oz, 11/4pk (MDWP)
- 68403 Pheasant A/L Brst, 6-8oz, 14/4pk (MDWP)
- 68404 Pheasant A/L Brst, 8-10oz, 11/4pk (MDWP)
- 68208 Pheasant Thighs B/O S/Off, 5/5# (M/P)
- 68205 Pheasant Legs 5/8 pc
- 61029 Quail Jumbo Whole, 5-6oz, 6/4pk (TXQ)
- 61028 Quail Jumbo S/B/O, 4-5oz, 6/4pk (TXQ)
- 61002 Quail Manchester S/B/O, 24pc, 6/4pk
- 61003 Quail S/B/O, 9/4pk (Plantation)
- 61009 Quail Whole, 6/6pk (Plantation)
- 61013 Quail Brst B/O, Medallions, 4.25# avg, 9/6pk
- 90010 Squab Whole, 24/16oz (P/P/P)
- 90029 Squab Whole, 12/13-15oz (S/P)
- 90030 Squab Whole 12/15-17oz (S/P)
- 90014 Squab S/B/O, 16/10-12oz (PPP)
- 90105 Squab B/O Brst, 24/2x3-4oz Dbl
- 90007 Squab Whole HOFO, 24/15-16oz (PPP)



Squab Whole 15-17oz | Item# 90030

Jidori A/L Breast 8-10oz | Item# 62074

Code	Item	FZN	CHD	Code	Item	FZN	CHD
------	------	-----	-----	------	------	-----	-----

OSTRICH-DOMESTIC

- 65001 Fan Fillets, 7pc avg./2.5-4# per pc
- 65014 Tenderloin, 17pc avg/1.5# avg per pc
- 65003 Inside Strips, 15pc avg/1# avg per pc
- 65024 Outside Strips, 19pc avg/1# avg per pc
- 65027 Oyster 1-1.25#, 6pc avg/1# avg per pc
- 65030 Pearl steak 10-12 oz, 40pc avg, 0.75# avg per pc
- 65016 Trim, 20# cse avg
- 65012 Steaks 8oz IVP, 10# cse
- 65010 Steaks 4-6oz IVP, 10# cse
- 65000 Ground, 10/1# cse

ALLIGATOR - DOMESTIC

- 10017 Tenderloin, 7/5# cse
- 10016 Tenderloin, 10/5# cse
- 10002 Sirloin, 8/5# cse
- 10003 Sirloin Tail Meat, 12/1# cse
- 10023 Sirloin Tail Meat, 12/1# cse (Wild Caught)
- 10005 Leg & Body (trim), 7/5# cse
- 10006 Whole Alligator, Head On/Feet On, 1pc, 25# cse avg.

CAMEL - AUSTRALIAN

- 80001 Trim, Boneless, 59.97# cse
- 80091 Ground, 10/1# cse
- 80003 Striploin, 45# avg cse 10/4.5# avg
- 80004 Ribeye, 45# avg cse, 10/4.5# avg
- 80002 Tenderloin, 45# avg cse 18/2.5# avg

FROG

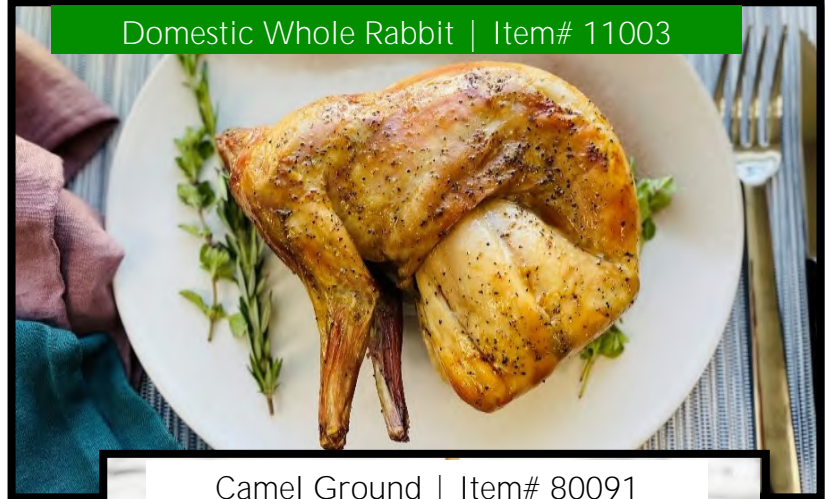
- 93001 Frog Legs 6-8 (sets/lb), 6/5# cse
- 93000 Frog Legs 4-6 (sets/lb), 6/5# cse
- 93002 Frog Legs 2-4 (sets/lb), 6/5# cse

TURTLE

- 13002 Boneless, 25/2# cse
- 13003 Boneless, 10/5# cse

IBERICO RABBIT

- 11303 Whole Fryers, 10/2.5-3.0#, SPAIN
- 11305 Rabbit Legs Imported, 2/4.4#, SPAIN
- 11312 Striploin B/O, 3/2.2#, (Eye of Loin) SPAIN
- 11316 Ground 2/5# SPAIN
- 11315 Rabbit Burger 5 oz, 10/2 pc, SPAIN



RABBIT

- 11003 Whole Domestic Fryers, 6/2.5-3# USA
- 11005 Hind Legs B/I, 6/4pk, 12# cse avg. USA
- 11008 Saddles B/I, 14oz avg pc, 6/3pk, 15# cse avg. USA
- 11403 Whole Imported Fryer, 6 /2.5-3# ITALY
- 11405 Hind Legs B/I, 8oz avg pc, 6/4 PK, 12# cse avg ITALY
- 11409 Rabbit Saddles B/O, 6/3 pc ITALY
- 11412 Rabbit Striploin B/O, 6/1.8# ITALY
- 11410 Trim, 2/10# ITALY
- 11028 Whole Imported Fryers, 7/2.5-3#, HUNGARY

Code	Item	FZN	Code	Item	FZN
SAUSAGES BISON					
71016	B/L Bison Southwestern 4-1, 10/1#				
71026	C/R Smoked Bison w/Red Wine 5-1, 12/12oz, 9# cse				
71027	C/R Bison w/Chipotle Chillies 5-1, 12/12oz, 9# cse				
SAUSAGES CHICKEN					
71023	B/L Chicken Jalapeno 4-1, 10/1#				
71019	Chicken Apple Breakfast 10-1, 9/1#				
71028	C/R Chicken w/Apple & Cran 5-1, 12/12oz, 9# cse				
71095	B/L Smoked Chicken Andouille 4-1, 10/1#				
SAUSAGES DUCK					
71038	B/L Duck w/Bacon 4-1, 10/1#				
71036	C/R Smoked Duck w/Apple Brandy 5-1, 12/12oz, 9# cse				
71030	C/R Duck w/Orange 5-1, 12/12oz, 9# cse				
SAUSAGES ELK AND VENISON					
71031	C/R Elk w/Madeira Wine 5-1, 12/12oz, 9# cse				
71160	C/R Elk w/Apple, Pear, Port Wine 5-1, 12/12oz, 9# cse				
71054	C/R Venison 5-1, 12/12oz, 9# cse				
71056	C/R Smoked Venison w/Port Wine 5-1, 12/12oz, 9# cse				
71037	C/R Venison w/ Merlot & Blueberry 5-1 12/12 oz, 9#				
71159	C/R Venison w/Red Wine/Demi Glace, 12/12oz, 9# cse				
71226	B/L Venison w/ Pork 5-1, 10/1#				
71033	C/R Smoked Elk w/Bacon & Cheese 5-1, 9# cse				
SAUSAGES LAMB					
71042	B/L Lamb w/Apple & Garlic 4-1, 10/1#				
71043	B/L Lamb Italian 4-1, 10/1#				
71032	C/R Lamb Merguez 5-1, 12/12oz, 9# cse				
71070	Fabrique Lamb Merguez retail (12/.75 lb) HALAL				
SAUSAGES PHEASANT					
71034	C/R Pheasant w/Brandy 5-1, 12/12oz, 9# cse				
SAUSAGES PORK					
71051	B/L Pork British Bangers 8-1, 10/1#				
71050	C/R Pork Andouille 5-1, 12/12oz, 9# cse				
33262	Berkshire Country 8-1, 32/8oz pkg, 16# cse				
33263	Berkshire Bratwurst 4-1, 16/1#				
33264	Berkshire Kickin' Kurobuta 4-1, 16/1#				
33265	Berkshire Mild Italian 4-1, 16/1#				



Smoked Wild Boar Bratwurst 4-1
Item# 71113

SAUSAGES WILD BOAR

- 71002 C/R Boar Bratwurst 5-1, 12/12oz, 9# cse
- 71025 C/R Boar w/Cranberries 5-1, 12/12oz, 9# cse
- 71158 C/R Boar w/Garlic & Marsala 5-1, 12/12oz, 9# cse
- 71003 C/R Boar Andouille 4-1, 12/1#
- 71005 C/R Boar Italian 4-1, 12/1#
- 71113 B/L Smoked Boar Bratwurst 4-1, 10/1#
- 71114 B/L Smoked Boar Hot Link 4-1, 10/1#
- 71115 B/L Smoked Boar Cheddar Jalapenowurst 4-1, 10/1#
- 71157 C/R Boar with Three Chiles 5-1, 12/12oz, 9# cse

OTHER SPECIALTY SAUSAGES

- 71103 B/L Smoked Alligator Andouille 4-1, 10/1#
- 71073 Smoked Turkey Maple B/Fast 8-1, 5# bulk cse
- 71035 C/R Rabbit with White Wine 5-1, 12/12oz, 9# cse
- 71044 Smoked Linguica 3-1, 5# bulk cse
- 71010 Boudin Noir (Blood) 4-1, 10/1#
- 71009 Boudin Blanc 4-1, 10/1#
- 71135 Saucisson a l'ail, (Pork) Garlic large, 12/1.5#
- 71124 Morcilla Spanish Blood Sausage 10/1#

Code	Item	FZN	CHD	Code	Item	FZN	CHD
------	------	-----	-----	------	------	-----	-----

HOT DOGS

- 58968 Wagyu Beef 2-1, approx 12 inch, 2/5#
- 58964 Wagyu Beef 3-1, 8 inch, 2/5#
- 58969 G/N Wagyu Skinless 6 inch 4-1, 2/5#
- 58984 Wagyu Beef 5-1 RETL, 6/8pc, 1.6#pk
- 58990 Wagyu Beef 5-1 6 inch, 2/5#
- 57960 Wagyu Beef 16-1, 2/5#
- 58960 Wagyu Beef 32-1, 10/1#

SAUSAGE MAKERS SECTION

- 64113 Moulard Duck Meat, #40 cse avg. (Trim)
- 97030 Elk Trim, 60# cse avg.
- 65792 NZ Lamb Trim, 65% CL, 60# cse avg.
- 65794 NZ Lamb Trim, 70% CL, 60# cse avg.
- 65793 NZ Lamb Trim 75% CL, 60# cse avg.
- 65796 NZ Lamb Trim, 80% CL 60# cse avg.
- 97091 Venison "B" Trim, 60# cse avg.
- 97009 Venison "C" Trim, 60# cse avg.
- 31023 Wild Boar Trim, 44# cse avg.
- 58643 AngusPure Grass Fed Trim 65% C/L, 60# cse avg.
- 58624 AngusPure Grass Fed Trim 80% C/L, 60# cse avg.
- 58606 AngusPure Grass Fed Trim 90% C/L, 60# cse avg.
- 31124 Wild Boar Fat, call for specs
- 24075 Bison Lean Trim, 90% VL, call for specs
- 11410 Rabbit Trim, 2/10#, ITALY
- 32001 Pork Casing 35/38, 1# pack, 70 yards

VEAL BONES - NZ

- 27004 Bobby Bones - Femur Cut, 44.09# cse

SMOKED PRODUCTS

- 64038 B/L Duck Breast, 24-28oz, 8pks IVP, 12# cse avg.
- 64039 B/L Duck Prosciutto, 12-16oz, 8/2pc, 10# cse avg.
- 62017 Chicken Breast 10-12oz, 8/2pc, 10# cse avg
- 32006 B/L Ham Tasso, 3-4pc per cse, 10# cse avg.
- 34214 Berkshire Ham B/O, Cooked Halves, 4/7.5#
- 34018 Nueske Ham bnls smoked 2/6-9# avg per pc
- 34019 Nueske Ham B/I Glazed Spiral 1/2 Ham (2pc)
- 34019 Nueske Ham B/I Glazed Sprial 1/2 Ham (2 pc)

BROADLEAF STOCKS AND GLACES

- 26070 Lobster Stock, 4/8#
- 26072 100% Veal Glace 4/5#



Code	Item	FZN	CHD	Code	Item	FZN	CHD
------	------	-----	-----	------	------	-----	-----

ANGEL'S SALUMI

- 67103 Venison & Berkshire Pork Salami, 6/5.5oz
- 67104 Black Truffle Le Perigord Salami, 6/6.5oz
- 67114 Black Truffle Le Perigord SLICED, 12/3oz
- 67107 Duck Salami, 6/5.5oz
- 34102 Duck Prosciutto, 6/10.5-12oz avg.
- 31060 Wild Boar Salami 6/5.5oz
- 31160 Wild Boar Salami SLICED, 12/3oz
- 34103 Wild Boar Prosciutto, 1pc IVP/4.5# avg

HEYWOODS PROVISIONS

- 14105 Lamb Pepperoni, 3/2pk, 1.5# per pc, 10# cse avg
- 50012 Nduja Wagyu, 17/ 8.8oz pc IVP, 9.5# cse avg

FABRIQUE DELICES

SAUSAGES

- 71121 Saucisson Sec (French Style Dry), 8/10-12oz
- 71122 Chorizo d'España (Spanish Style Dry), 10/1#
- 71135 Saucisson a l'ail, (Pork) Garlic large, 12/1½#
- 71123 Chorizo Sausage, 10/1#
- 71124 Morcilla Spanish Blood Sausage 10/1#

TRADITIONAL PATES, MOUSSES

- 67012 Goose Supreme w/Sauternes-Pork Free, 2/3.5#
- 67013 Pheasant Terrine w/Figs & Pistachios, 2/3.5#
- 67021 Truffle Mousse (Chicken), 2/3.5#
- 67002 De Campagne w/Black Pepper (Pork), 2/3.5#
- 67018 Venison Pate w/ Apricots & Hazelnuts, 2/3.5#
- 67006 Duck Mousse w/ Port Wine, 2/3.5#
- 67010 Forestier Pate w/ Porcini & Garlic (Pork) 2/3.5#



Wagyu Pastrami (whole slab)
2pc/6-9# avg per pc
Item #57260

BROADLEAF DELI ITEMS

- 57260 B/L Wagyu Pastrami, 2 pc/6-9# avg per pc
- 57350 B/L Wagyu Raw Corned Brisket, 6/6#
- 57353 B/L Wagyu Raw Corned Eye Round, 4/6.5# cse avg.
- 57348 B/L Grass Fed Corned Brisket, 6/4#
- 57355 B/L Wagyu Corned Bottom Round, 6 pc/4.5# avg
- 57256 B/L Wagyu Bresaola Sliced, 4oz - Retail per pk.
- 57255 B/L Wagyu Bresaola Slab, 10# case

FOIE GRAS (ONLY AVAILABLE OUTSIDE CALIFORNIA)

- 92001 Duck Foie Gras A Hudson, 1pc IVP, 1.5# avg
- 92002 Duck Foie Gras B Hudson, 1pc IVP, 1# avg
- 92118 Duck Foie Gras A Sliced 2oz/pc, 3/2#pk
- 92016 Duck Foie Gras Hudson Cubes, 1# cse avg.
- 92017 Duck Foie Gras Hudson Terrine, 1.3#
- 92024 Duck Foie Gras Hudson Torchon 16oz
- 71029 C/R Duck Sausage w/ Foie Gras 5-1, 12/12oz, 9#



Wagyu Corned Brisket Item# 57350

Code	Item	FZN	CHD	Code	Item	FZN	CHD
------	------	-----	-----	------	------	-----	-----

Venison Denver Leg | Item# 45034



BROADLEAF CERVENA VENISON (RED DEER)

- 42006 Saddle, B/I, 2-3/11-17#
- 43064 Tenderloin, 10/2pk, 12# avg.
- 42126 NY Strip Loin, TTS 8-10/ 1.5-2#
- 43016 Strip Loin Full TTS, 12/4.5-5.5#
- 42086 Frenched 8 Rib Rack, 10/2-2.5#
- 42026 Frenched 2 Rib Rack, 20/2pk, 1#pk
- 45034 Denver Leg B/O, 2/5#
- 45013 Leg De-skinned Muscle Set, B/O, 10# avg.
- 44010 Leg B/I, 2/20# avg.
- 51002 Flank Steaks, 13# avg.
- 85255 Bistro Fillet
- 96032 Venison Jerky Shoulder Muscles DND
- 97032 Jerky Leg/Loin Muscles DND
- 85142 Bottom Round Cap On, 41# avg.
- 44013 B/I Leg , Femur Bone only

BROADLEAF CERVENA VENISON (RED DEER) | CONTINUED

- 96046 Shoulder B/O BRN, approx 6/4#+
- 96078 Shoulder B/O BRN, approx 6-10/pc, 2#+
- 45051 Bones, 26# avg.
- 96079 Venison Shoulder B/O, shank on, 44# avg.
- 82008 Venison Hearts
- 82010 Venison Livers
- 82011 Venison Kidneys
- 97018 B/I Hindshanks, 42# avg.

BROADLEAF VENISON (RED DEER)

- 48988 Medallions 4oz, 10#
- 48987 Medallions 6oz, 10#
- 48986 Medallions 8oz, 10#
- 48994 Loin Chops B/I 10-12oz
- 48997 Rib Chops B/I 10-12oz
- 48996 Rib Chops B/I 8-10oz
- 48933 Osso Bucco Hind Shank, 3 inch, 10#
- 48984 Osso Bucco Fore Shank, 3 inch, 10#
- 48990 Ground, 4/2.5#
- 48991 Ground, 10/1#
- 48982 Patties 2-1 Round, 10#
- 48981 Patties 3-1 Round, 10#
- 48980 Patties 4-1 Round, 10#
- 46135 Stew Meat (Diced), 2/5#
- 48979 Stew Meat (Diced), 10/1#
- 48957 Venison w/Beef Ground, 10/1#
- 48963 Venison w/Beef Stew, 2/5#

RETAIL VENISON PRODUCTS

- 48948 Medallions Boxed, 6/3x4oz
- 48943 Stir-Fry Boxed, 6/1#
- 48900 Venison Ground, 10/1#
- 48940 Patties Boxed, 6/4x4oz
- 48972 Jerky Black Pepper, 2oz
- 48970 Jerky Black Pepper, 4oz

Code	Item	FZN	CHD
BROADLEAF CERVENA ELK / WAPITI X			
42007	Saddle B/I (Split), 2/20# avg.		
42165	Shortloin Saddle B/I, 3/10# avg.		
43025	Tenderloin, 8/2pk, 16# avg.		
43017	NY Strip Loin, DND, 8/1.5-2#		
43056	Strip Loin Full TTS, 9/4-5#		
42052	Frenched 8 Rib Rack, 8/2.5-3#		
42027	Frenched 2 Rib Rack, 20/2pk, 1#pk		
45028	Denver Leg B/O, 2/5# avg.		
45068	Leg De-Skinned Muscle Set, B/O, 10# avg.		
41002	Flank Steaks, 15# avg.		
96060	Shoulder Jerky Steaks, 48# avg.		
85162	Bottom Round Cap On, 41# avg.		
96047	Shoulder B/O BRN, 42# avg.		
97060	Elk Steak / Leg/Loin for Jerky		
95318	Elk Bottom Round denuded (limited volume)		

BROADLEAF ELK / WAPITI X			
49991	Medallions 4oz, 10#		
49990	Medallions 6oz, 10#		
49989	Medallions 8oz, 10#		
49995	Loin Chops B/I 8-10oz		
49998	Loin Chops B/I 10-12oz		
49962	Osso Bucco Hind Shank 2 inch, 10#		
49993	Ground, 4/2.5#		
49994	Ground, 10/1#		
49900	Ground, 10/1# Retail		
49988	Patties 2-1 Round, 10#		
49987	Patties 3-1 Round, 10#		
49986	Patties 4-1 Round, 10#		
46136	Stew Meat (Diced), 2/5#		
49983	Stew Meat (Diced), 10/1#		
87105	Elk bone-in hindshank		

RETAIL ELK PRODUCTS			
49981	Jerky Black Pepper, 2oz		
49979	Jerky Black Pepper, 4oz		

New Zealand Farm Raised Venison

New Zealand farm raised and grass fed Venison gives a hint of rustic elegance to any menu. Rich yet subtle in flavor, these fabulous menu items range from tenderloins for center of plate presentation to Denver Legs B/O, portion controlled chops and medallions and ground items for out-of-the box burger plates.



Code Item FZN

BROADLEAF RETAIL GROUND, PATTIES & HOT DOGS

- 24000 Bison Ground, 10/1#
- 24085 Bison Patties 4-1 Round, 6/4x4oz
- 49900 Elk Ground, 10/1#
- 48945 Venison Ground, 6/1#
- 48900 Venison Ground, 10/1#
- 48940 Venison Ground Patties 6/4x4oz
- 31000 Wild Boar Ground, 10/1#
- 20100 Grass Fed Beef Ground 10/1#
- 58984 Wagyu Beef Hot Dog 5-1, 6/8pc (1.6#pk)

BROADLEAF RETAIL STEAKS

- 24082 Bison Ribeye Stk Boxed, 6/2x5oz, price per pack
- 24080 Bison NY Strip Stk Boxed, 6/2x7oz, price per pack
- 24077 Bison Top Sirloin Stk, Boxed, 6/2x8oz, price per pack
- 48948 Venison Medallions Boxed, 6/3x4oz, price per pack
- 48943 Venison Stir-Fry Boxed, 6/1#, price per pack

BROADLEAF RETAIL POULTRY

- 64035 Muscovy Duck Drake Breast, 10pc

BROADLEAF RETAIL JERKY

- 24081 Bison Jerky, Black Pepper, 2oz, price per pack
- 24083 Bison Jerky, Black Pepper, 4oz, price per pack
- 48972 Venison Jerky, Black Pepper, 2oz, price per pack
- 48970 Venison Jerky, Black Pepper, 4oz, price per pack
- 49981 Elk Jerky, Black Pepper, 2oz, price per pack
- 49979 Elk Jerky, Black Pepper, 4oz, price per pack



CURED

- 57256 Wagyu Beef Bresaola, Sliced, 4oz, price per pack
- 30016 Wild Boar Sliced Bacon, 10/1#
- 57350 Raw Wagyu Corned Brisket, 6 pc, 30# avg case

***UNLESS NOTE


UND***

Retail Wagyu Hot Dogs | Item# 58984

Shake Up Your Retail Game

<p>Bison Ground, 10/1# Item 24000</p> <p>Wild Boar Ground, 10/1# Item 31000</p>	<p>Venison Ground, 10/1# Item 48900</p> <p>Grass Fed Beef Ground 10/1# Item 20100</p> <p>Elk Ground, 10/1# Item 49900</p>
---	---



BROADLEAF
specialty & game meats

CHATEAU ROYALE RETAIL SAUSAGE

- 71027 Bison Chipotle 5-1, 12/12oz
- 71034 Pheasant Brandy 5-1, 12/12oz
- 71037 Venison Merlot 5-1, 12/12oz
- 71025 Wild Boar Cranberry 5-1, 12/12oz
- 71032 C/R Lamb Merguez 5-1, 12/12oz, 9#



Game Day



Specials



Wagyu Patties | 2-1 item# 58992
other sizes available



Wagyu Hot Dogs | 5-1 item# 58990
other sizes available



Wild Boar Ground | item# 31008
other flavors available



Chicken Jalapeño Sausage | item# 71023
other flavors available



Hellaby Grass Fed Flap Meat | item# 51705



Wagyu Back Ribs | item# 5B8920



BROADLEAF[®]

specialty & game meats

ANDOVER ESTATE



Jidori A/L Breast 8-10oz Item #62074

BIN 28
SHIRAZ



BROADLEAF®

specialty & game meats



SANCHOKU
WAGYU

Australian Wagyu Tenderloin MS8-9
Whole Muscle B/O 190 spec
Item SB3408

Other Marble Scores Available see PAGE 5



BROADLEAF[®]
specialty & game meats

March Madness Pizza Party!

Top Left

Lamb

Ground 4x2.5 Item# 16034
Italian Sausage Item# 71043

Top Right

Wagyu

Ground 4x2.5 Item# 58999
Bresaola Slab Item# 57255
Bresaola 4oz Sliced Item# 57256

Bottom Left

Wild Boar

Ground 4x2.5 Item# 31008
Sliced Bacon Item# 30016
Italian Sausage Item# 71005

Bottom Right

Venison

Ground 4x2.5 Item# 48990
Smoked Sausage w/ Port Wine
Item# 71056

